

# COB Cannon LP200STX

Light Efficiency:



Light Quality:



Color Temperature:



Output: 1299 lm

Peak: 1424 cd

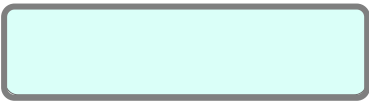
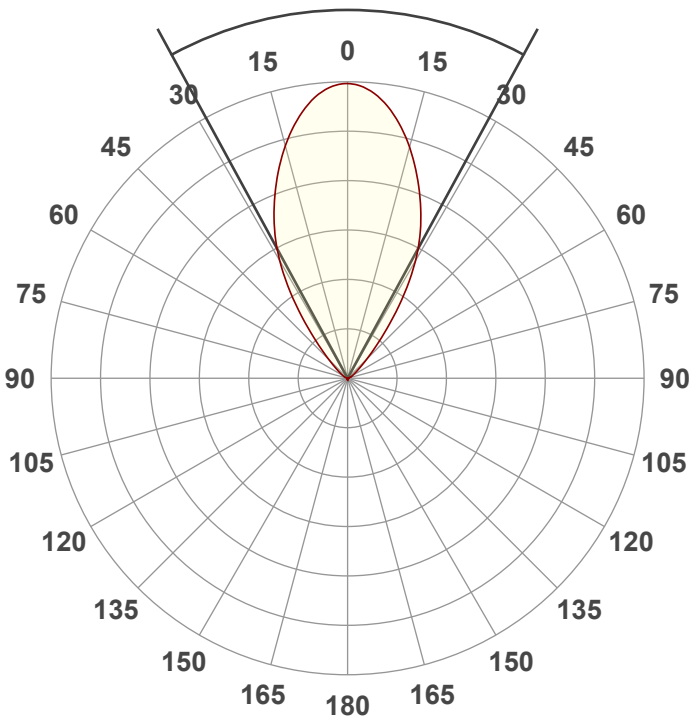
Power: 66.6 W

PF: 0.98



Beam Angle

57.1°



CIE 1931  
x: 0.320  
y: 0.342

Product Name:

COB Cannon LP200STX

Test:

White

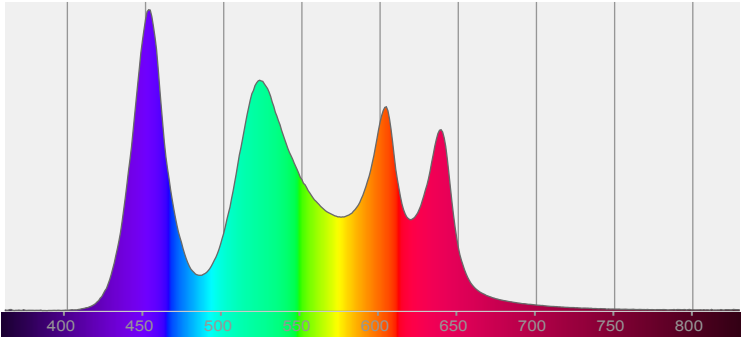
Date:

01/28/2025

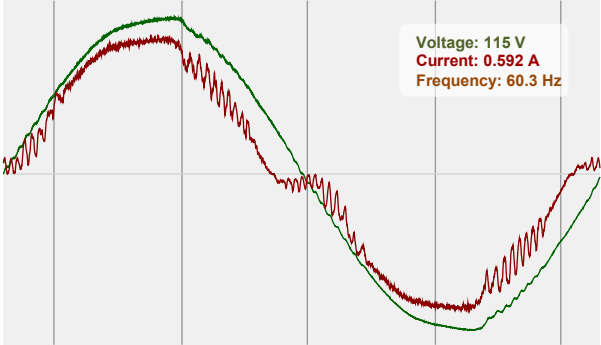
Note:

Spectra

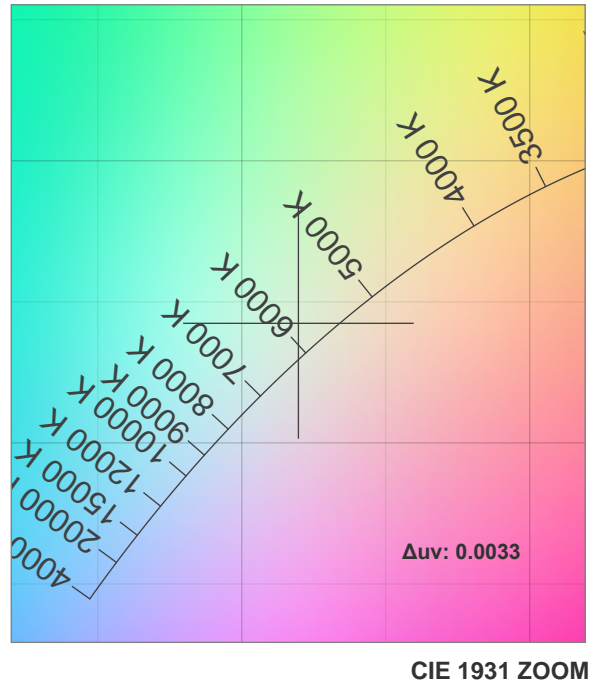
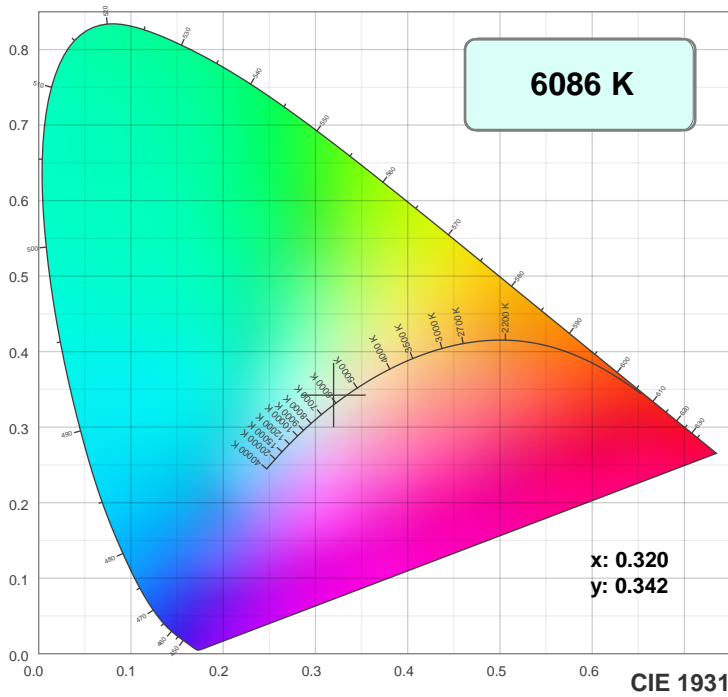
Dominant Wavelength: 569nm



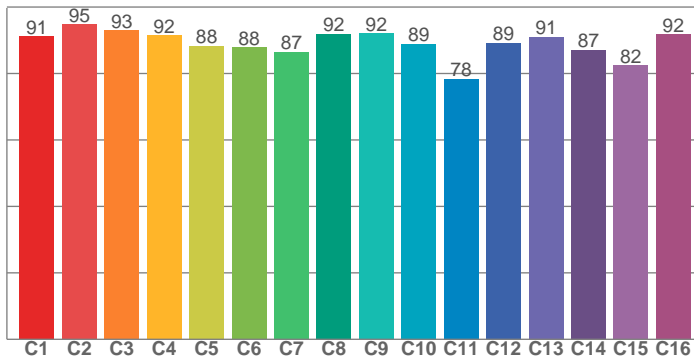
Power



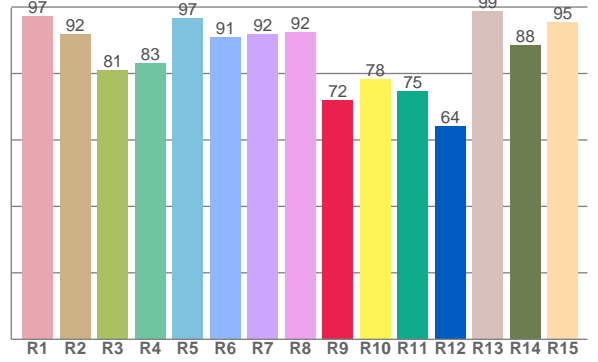
## Color Details



TM30: 88.9



CRI: 90.5 (R1-R8)



CRI R values, only R1-R8 are used to calculate final CRI value

R1	R2	R3	R4	R5	R6	R7	R8	R9	R10	R11	R12	R13	R14	R15
97.3	91.7	80.9	83.0	96.5	90.9	91.7	92.3	71.9	78.2	74.7	64.0	98.8	88.4	95.3

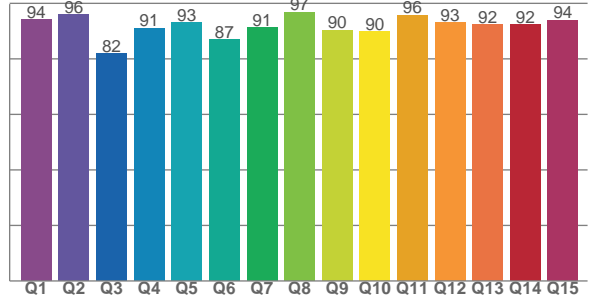
TM30 C values, 16 binned values out of total of 99 C values

C1	C2	C3	C4	C5	C6	C7	C8	C9	C10	C11	C12	C13	C14	C15	C16
91.1	94.7	92.9	91.5	88.3	87.8	86.5	91.9	92.1	88.9	78.4	89.2	91.0	87.1	82.3	91.7

CQS Q values

Q1	Q2	Q3	Q4	Q5	Q6	Q7	Q8	Q9	Q10	Q11	Q12	Q13	Q14	Q15
94.2	96.0	81.9	91.0	93.1	86.9	91.3	96.9	90.4	89.8	95.7	93.1	92.4	92.3	93.9

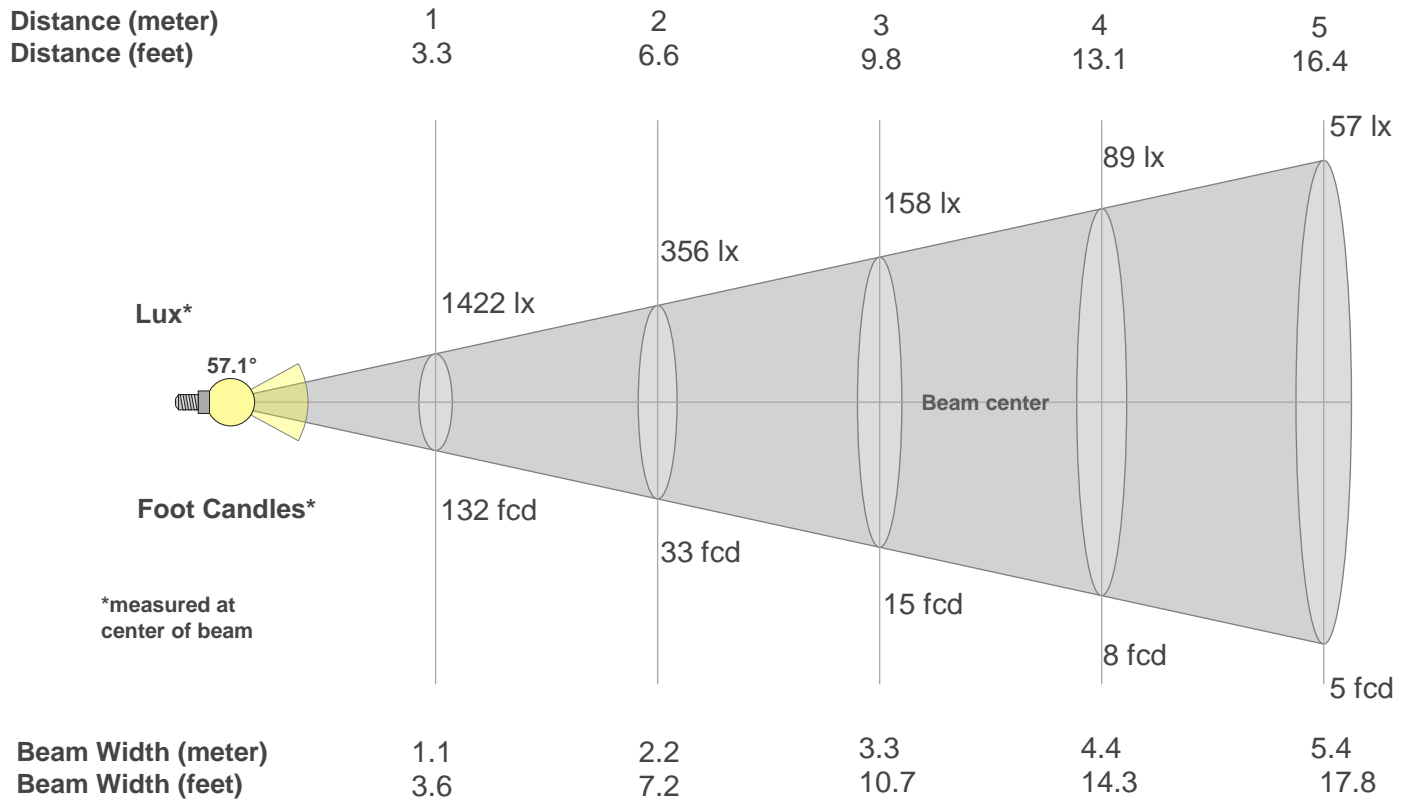
CQS: 91.1



## Color Parameters

Color Temperature	Color Rendering Index	Red Component	Color Fidelity	Color Gamut	Color Quality Scale	Color Coordinate CIE 1931	Color Coordinate CIE 1931	Color Coordinate	Color Coordinate	Color Deviation from Black Body
CCT	CRI	CRI R9	TM30 Rf	TM30 Rg	CQS	x	y	u	v	$\Delta uv$
6086 K	90.5	71.9	88.9	105.0	91.1	0.320	0.342	0.198	0.318	0.0033

## Beam Details



### Beam Intensities from 1-20m

m	1	2	3	4	5	6	7	8	9	10	11	12	13	14	15	16	17	18	19	20
ft	3.3	6.6	9.8	13.1	16.4	19.7	23	26.2	29.5	32.8	36.1	39.4	42.7	45.9	49.2	52.5	55.8	59.1	62.3	65.6
lx	1422	356	158	89	57	40	29	22	18	14	12	10	8	7	6	6	5	4	4	4
fcd	132.1	33	14.7	8.3	5.3	3.7	2.7	2.1	1.6	1.3	1.1	0.9	0.8	0.7	0.6	0.5	0.5	0.4	0.4	0.3

### Intensities in 0° C-plane

0°	2°	4°	6°	8°	10°	12°	14°	16°	18°	20°	22°	24°	26°	28°	30°	32°	34°	36°	38°
1422	1416	1402	1376	1339	1296	1246	1191	1132	1070	1006	940	874	805	733	655	571	484	397	318
100%	100%	99%	97%	94%	91%	88%	84%	80%	75%	71%	66%	61%	57%	52%	46%	40%	34%	28%	22%

### Intensities in 90° C-plane

0°	2°	4°	6°	8°	10°	12°	14°	16°	18°	20°	22°	24°	26°	28°	30°	32°	34°	36°	38°
1422	1416	1402	1376	1339	1296	1246	1191	1132	1070	1006	940	874	805	733	655	571	484	397	318
100%	100%	99%	97%	94%	91%	88%	84%	80%	75%	71%	66%	61%	57%	52%	46%	40%	34%	28%	22%

### Intensities in 180° C-plane

0°	2°	4°	6°	8°	10°	12°	14°	16°	18°	20°	22°	24°	26°	28°	30°	32°	34°	36°	38°
1422	1416	1397	1371	1335	1290	1240	1185	1125	1063	1000	935	870	803	732	656	572	486	402	321
100%	100%	98%	96%	94%	91%	87%	83%	79%	75%	70%	66%	61%	56%	51%	46%	40%	34%	28%	23%

### Intensities in 270° C-plane

0°	2°	4°	6°	8°	10°	12°	14°	16°	18°	20°	22°	24°	26°	28°	30°	32°	34°	36°	38°
1422	1416	1397	1371	1335	1290	1240	1185	1125	1063	1000	935	870	803	732	656	572	486	402	321
100%	100%	98%	96%	94%	91%	87%	83%	79%	75%	70%	66%	61%	56%	51%	46%	40%	34%	28%	23%

Beam Angle 50%	Field Angle 10%	Cutoff Angle 2,5%	Intensity Ratio in 120° Cone	Intensity Ratio in 90° Cone
57.1°	88.7°	114.2°	96.6%	90.5%